

ASIA-PACIFIC STAKEHOLDERS WEBINAR

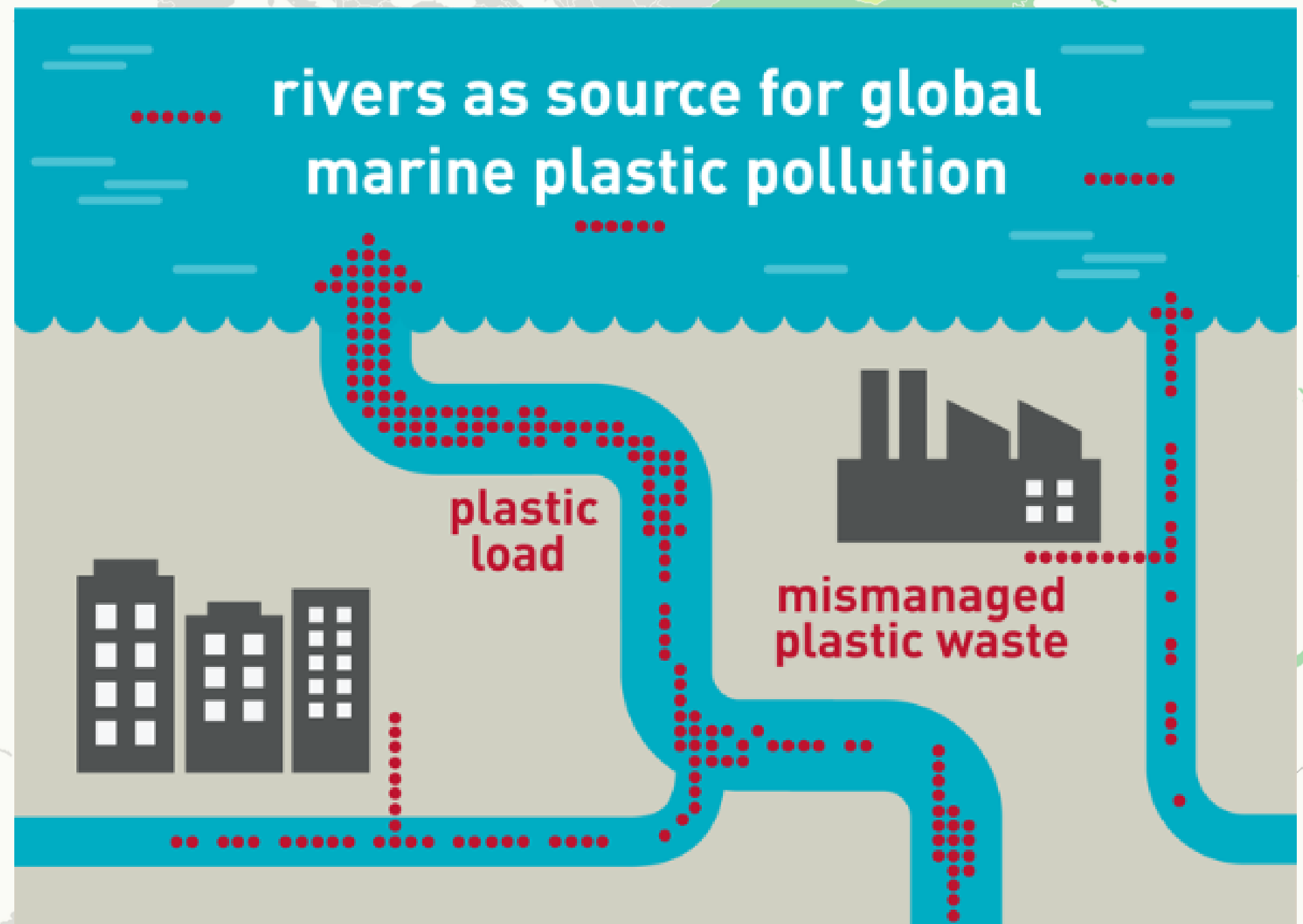
# MARINE PLASTIC POLLUTION

by Fithriyyah  
Seangle Indonesia



*"More than half is single-use plastics and recognised as being one of the most noticeable pollutants affecting the ocean worldwide."*

A recent study show the 10 top-ranked rivers transport 88–95% of the global load into the sea. Eight of them in Asia.



# Plastic pollution in Indonesia

**Plastic is very easy to find in daily life in Indonesia.**

Every day, Indonesia generates 175,000 tons of waste and about 14% or 24,500 tons a day of plastics.

Currently 81% of waste in Indonesia is unsorted; making it difficult to recycle, causing plastic waste to end up in landfills or leak into the ocean instead.

According to the World Bank's Indonesia Marine Debris Hotspots Rapid Assessment, 20% of plastic waste in Indonesia is believed to end up in rivers and coastal waters.





# The overview



## INDONESIA IS THE SECOND-LARGEST PLASTIC POLLUTER IN THE WORLD AFTER CHINA

Data from Nature Communications revealed that four of Indonesia's rivers – Brantas, Solo, Serayu and Progo – rank among the 20 most polluted rivers in the world.

## POLICIES, LAWS AND REGULATIONS

The Indonesian government has recently adopted Indonesia's Plan of Action on Marine Plastic Debris 2017-2025 aiming to reduce marine plastic debris by 70% by 2025.

## TECHNOLOGIES AND INNOVATIONS

Plastic recycling is still in its early stages in Indonesia due to a lack of supporting infrastructure for plastic waste collection, processing and recycling. The plastic recycling business is mostly handled by informal, community-based, small-scale enterprises.

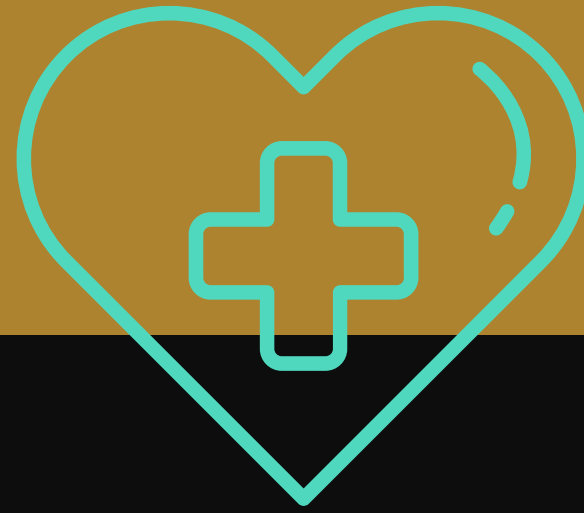


Some shots on the riverside; Kapuas River, Pontianak City  
West Borneo , Indonesia

# WHAT WE NEED TO AWARE



ENVIRONMENTAL  
IMPACT



HEALTH IMPACT



ECONOMIC IMPACT

# What we can do?

1. Start from yourself
2. Take a part in environment movement
3. Give donation
4. Support bans
5. Do recycle
6. Stand for campaign

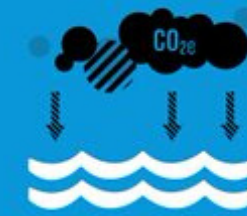
Targets for Action, Goal 14:



14.1



14.2



14.3



14.4



14.5



14.6



14.7

Seangle Indonesia aims to fight the issue of marine debris based on a social innovation lab principles with hope to increase public awareness in reducing the consumption of plastic and able to apply proper waste management.



@SEANGLE\_ID



# Our Lab-Based Projects



## Seaschool

Instilling proper waste management practices to the local schools



## Rumah Pendidikan Sampah

Learn english and other non-formal educational lessons with plastic waste in exchange



## Up-cycling

Local empowerment by utilizing waste and turn them into something valuable and marketable



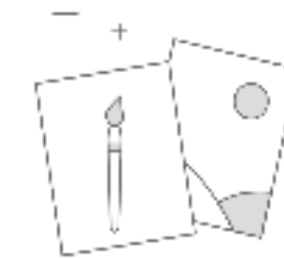
## Kembali Cloth x Seangle

Every purchase of the Kembali Cloth product contributes to help the fight of marine waste issues through Seangle programs.



## Our lab

As an innovation lab, Seangle opens a forum for the public to voice ideas in regards with environmental problems and really open for collaboration, so that the community becomes part of the solution.



## Paper School

Paper School is a paper waste recycling program that becomes a valuable product.

Supported by Baju Kertasku

# WHAT WE'VE DONE



FORMED **7 CHAPTERS** IN INDONESIA



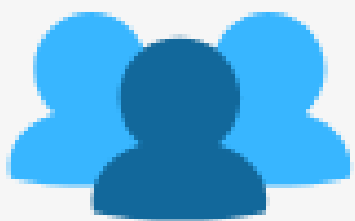
PREVENTING **620 KGs** PLASTIC WASTE END UP IN OCEAN



CONDUCTED **3920** MANGROVE TREES CONSERVATION



IN COLLABORATION WITH **74** COMMUNITIES AND STAKEHOLDERS



ENGAGING **4384** VOLUNTEERS FROM EVERY SEANGLE'S PROJECT OR COLLABORATIONS



ENGAGED IN **83** CAMPAIGNS AND COLLABORATION IN ENVIRONMENT PROJECTS



EXPOSED IN **44** ONLINE AND OFFLINE MEDIA



PRODUCE **9** RECYCLING PRODUCTS

# OUR COMMITMENT

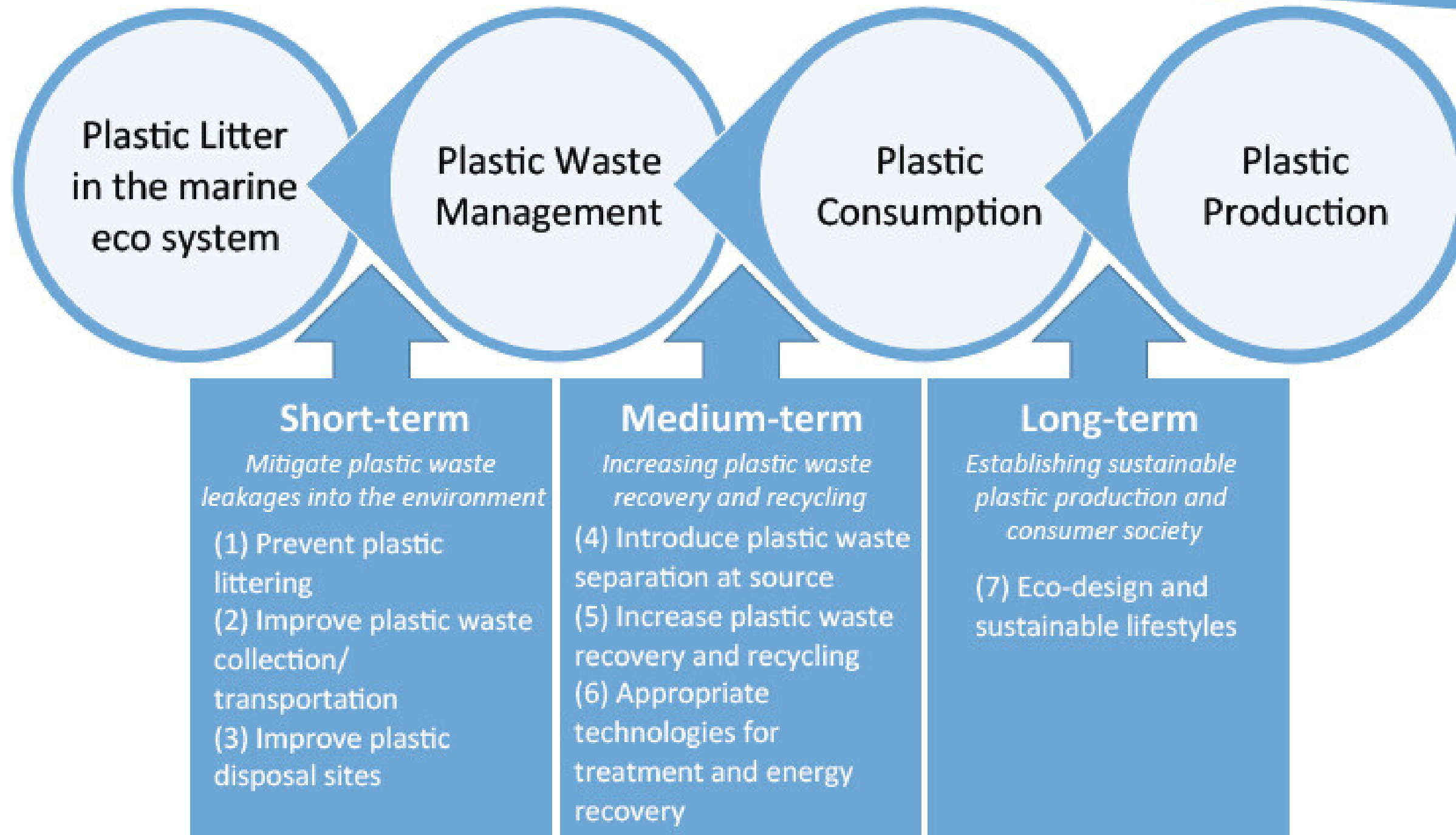


# OUR COMMITMENT



# Solutions?

Up to 80% of marine plastic pollution can be reduced from land-based solutions



**THANK YOU!**

Fithriyyah

**EMAIL ADDRESS**

fithriyyahiskandar@gmail.com